



# FUELLED

NEWSLETTER

DECEMBER 2019

## AGRICULTURAL CONTRACTORS ARE IN FULL SWING



McFall Enterprises grew out of the need to make winter feed for the Arohena farm and then like other farmers at that time the Morris McFall was the farmer with the baler made who made the hay for others around them. Since then the growth in the agricultural contracting sector in New Zealand has been significant and this has been driven

partly by farmers looking to avoid the capital outlay needed for the very specialised equipment required for the season. It seems hard to believe but the contribution to the GDP is now about \$1.5 billion and 1% of New Zealand's workforce is involved in the sector. It is estimated that 23,000 people are involved in rural contracting which has grown at a rate of 4% each year for the past 18 years. The chemicals used in ag contracting has meant that staff need to be trained and so farmers are offered a specialist to manage what has become much more technical than the old days. However, it is the weather challenge that remains unchanged for the farming sector.



## TARANAKI ON SHOW

The Waverley and Stratford Shows were a great success with



large numbers enjoying the day out in their local communities. The Big Dine In is organised by Beef & Lamb NZ as a formal occasion to dress up, socialise, and celebrate all things farming. McFall Fuel's Taranaki Area Sales Rep Kylie Northcott is presenting one of the prizes given on the night as part of the occasion.



## THE FUN & COMPETITION AT PET DAYS



Pukeatua School  
Goat Acton & Trophies



Matawai School in Gisborne celebrating their day

Many of you will remember the preparation and the lead up to Calf Club or Pet Days. McFall Fuel support a number of these each year within the communities within which we operate. Schools are supported with a McFall Fuel BBQ. "This year we have supported schools in the Waikato, Hawkes Bay, Taranaki, and Gisborne," said Sheryl Dawson. "The notes of thanks and appreciation received from the schools are very creative. Some of the approaches taken to these days within the schools see craft events; pets all dressed up; and wearable art as part of the fun. Fundraising is also important." Dogs, goats, and other pets are judged along with lambs. Many of the school pet days have been running for over 100 years with longstanding traditions.

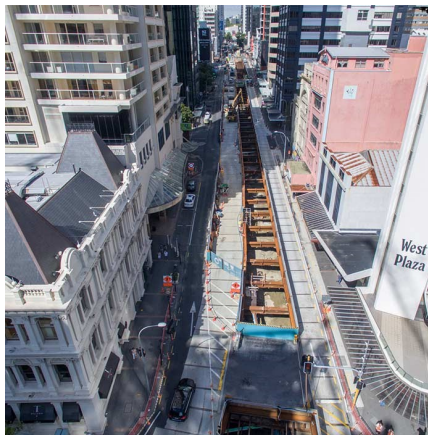


# What's Happening @ McFall Fuel

## SUMMER SEES HEIGHTENED ROADWORKS

This time of the year there are roadworks happening on numerous roads across the North Island. Despite our frustrations as drivers, the value of what is done can see a well made road last for 20 to 50 years. There have been a number of advancements in road construction including the expectation that hard wearing road surfaces meet the internationally recognised performance criteria to ensure that what is done, is completed for the long term. The mix of bitumen and stones that sits below the surface needs to be graded and compacted extremely well. Lime or cement are used to improve the strength of the crushed stone if required and skid resistance is also measured and monitored. The measurement of skid resistance sees the use of a specialist vehicle and every highway in New Zealand is surveyed annually. There is obviously a lot more that goes into the making of our roads than many of us realise. Therefore, showing understanding and patience at this time of year when we are stopped or slowed is a small price to pay for safer and better roads in the long term.

The road disruptions in Auckland city are of a different kind and are occurring in relation to the Auckland City Rail link which is well underway. Those who took the opportunity to enjoy the 600 metre walk were quick to say how exciting it was. This is New Zealand's largest transport infrastructure project with a projected finish of 2024. The \$4.4 billion cost of the city rail link will close the gaps in the train network in Auckland.



## HAPPY CHRISTMAS & ALL THE BEST FOR 2020



McFall Fuel wishes to welcome and thank the 502 new customers who became part of our family in 2019. At the same time we would like to convey a special thank you along with our appreciation to all of our very loyal customers who have been with us from one to 34 plus years.

We wish you all a safe and happy Christmas and we are looking forward to working with you in the New Year.

2019 has been an exciting year and here's to an even better 2020.

## GATHER BAGS THE IDEAL CHRISTMAS GIFT



McFall Fuel's no harm to the environment value is important and the Gather Bags offered as loyalty are a positive way of reflecting this. These bags are an ideal Christmas gift. Contact Lara who manages the McFall Fuel Loyalty Programme on email today to ensure that you have the ideal gift for family and friends.

[lara.griffin@mcfallfuel.co.nz](mailto:lara.griffin@mcfallfuel.co.nz)

Go to [www.mcfallfuel.co.nz](http://www.mcfallfuel.co.nz) for more information on Gather Bags



High capacity bags



Mesh produce bags



Insulated bags



Six bottle carrier

## MCFALL FUEL HOURS OVER THE HOLIDAY PERIOD

The Mount & Palmerston North Office will be closed on the statutory days.

Christmas—Wednesday 25

Boxing Day—Thursday 26

New Years Day—Wednesday 1

Day After New Year — Thursday 2

For all URGENT needs call

0800 623 255

**McFALL LOYALTY**

## The Complete Package



BULK FUEL



FUEL CARD



FUEL TANKS



LUBRICANTS



SERVICE



TANK REPAIRS & MAINTENANCE