



# FUELLED

NEWSLETTER

NOVEMBER 2020

## GISBORNE YARD IS OPERATIONAL

The new McFall Fuel yard and offices in Gisborne were opened with a blessing (Karakia) by Ngai Tawhiri and a welcome by Allan McFall. "This new set up will provide us with not only the ability to see the operational functions run so much more effectively and efficiently but



also provide a great space for the Team to be able to work and plan together," said Allan. Following the blessing, an Emergency Training Session was run with local services such as the Fire Brigade and Port Eastland. The Opening Day ended with a customer gathering where all reinforced the message of the day. 'The yard shows a real commitment to our Gisborne Region. We can so easily be cut off



from the rest of the country with the two roads in being so prone to closure in bad weather because of slips. Security of fuel supply for our businesses is important to us at such times and this means a reduced level of risk for us.'

## THE LATEST ADDITION TO THE FLEET



The Volvo FH 700 8x4 with an 18,000 litre tank towing the 5 axle 32,000 litre dog trailer will be an integral part of the McFall Fuel Fleet getting the fuel from Napier to Gisborne. Logistics Manager, Scott Jeanes said "it had taken just over 18 months to come up with the ability to move the greatest amount of volume per trip to Gisborne achieving the best possible levels of efficiency. Safety

was also a consideration in this equation." The Team are very proud of this latest addition to the company fleet and it will be seen travelling between Napier and Gisborne.

## KEEPING AN EYE ON THE WEATHER & LABOUR SHORTAGES

As we move into summer last years drought remains firmly embedded in our minds. However, it is hoped that in the North Island the higher chance of good rain through November and December will help.

Labour shortages have replaced the weather worries. It is estimated that the 10,000 workers required for thinning, picking, packing and processing between November and April in the Hawkes Bay will place pressure on the horticulture and viticulture sectors. The Dairy Farmers and Rural Contractors are also feeling the impact of the labour shortage along with the Waikato



berry growers. Working six days a week for 10 hours a day in the outdoors and getting the right person for this work is challenging. There is no doubt that the effect of the pandemic is forcing us all to be more innovative and flexible in our approach not only to employment but also our approach to the work offered.



# What's Happening @ McFall Fuel

## SITE AND ACCESS SAFETY

The McFall Fuel Site Safety Checklist is an important tool used to ensure that our heavy vehicles are able to travel safely and without obstruction from the public road to the delivery site. Keeping driveways, farm races, and any path travelled well maintained is essential. When entering and exiting the property a clear line of sight to all traffic movement is required. Safe site access is an on-going maintenance issue that customers are faced with whether it be pruning trees and hedges to the minimum of 3 metres across and 4 metres high or ensuring that the access being driven on is a robust surface in all weathers. Any obstacles or obstructions in and around the tank need to be removed to allow the driver not only safe access to reach the tank but also sees a clear line of sight between the tank and the heavy vehicle delivering to the tank.

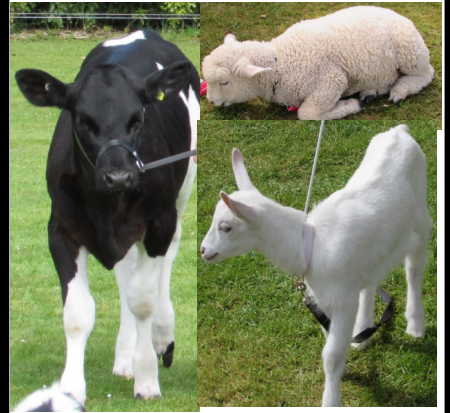
Bridges need also to be taken into consideration when assessing site access. Bridges, Crossings, and Culverts need to be capable of supporting a fully loaded fuel tanker safely. Construction of the bridges must meet the applicable engineering standards. If the crossings have been engineered and appropriately certified, then a sign should be erected showing the axle and maximum weights and any speed restrictions before the bridge. As always if you are uncertain about any of this do not hesitate to ask.



## PET DAYS UNDERWAY



The Pet Days are underway around the North Island in a number of Regions. Pukeatua School in the Waikato was the first with others to follow in the Gisborne, Hawkes Bay, and Taranaki Regions. The schools involved have all had long standing relationships with McFall Fuel and all have been very pleased to be able to hold these unique community events in 2020. The youngsters take a great deal of pride in their calves, lambs and goats making sure that they look their best on the day for the judges to make their assessment.



## AGRIFARM UTTO MP



AGRIFARM UTTO MP's special additive components guarantee outstanding deceleration performance combined with a high capability of noise suppression over the full oil drain. Also gearboxes or combined gearbox-hydraulic-systems of agricultural and construction machinery with fill instruction HD-engine oil SAE 10W-30 or gear oils SAE 75W-80 acc. to API GL-4 can be filled using AGRIFARM UTTO MP.

RENOLIT XTB 2 is a long-life multi-purpose grease specially designed for extreme bearing applications. RENOLIT XTB 2 is suitable for a variety of automotive applications, including wheel bearing and general chassis lubrication. It is a blue coloured lithium complex grease which has been formulated to provide improved oxidation, wear, protection, and corrosion resistance compared to conventional greases.

McFall Fuel has a strong network of lubricant distribution centres across the North Island out of which the products to meet your equipment needs can be delivered to you or you may choose to arrange the collection of your lubricants if that better meets your needs.



McFALL LOYALTY

## The Complete Package

