



FUELLED

NEWSLETTER

AUGUST 2016

KEVIN BIGGAR'S OARSOME ADVENTURE



Kevin Biggar spoke at the McFall Fuel Conference in Taupo and proved to be not only entertaining but also very thought provoking. From couch potato to extreme athlete takes a great deal of inspiration and motivation. The focus on playing as a team and working to achieve the end goal resonated strongly with the McFall Fuel staff who have all been busy working towards 'One Team' following the announcement of the merge in 2015. The stories to support the 'Energy Rule' put a very positive spin on what needs to occur to push through to reach the finish line. Avoiding saying

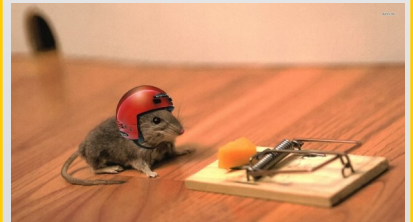
or doing anything that will reduce the energy levels of the team is quite a challenge for us all to take on along with remembering that any setback just requires greater determination or perseverance. In the race across the Atlantic as they came towards the end the decision to stow the anchor in the face of the storm was what set them apart. As Kevin stated "if it is hard for you then it is tough for everyone and that is clearly an opportunity for you!"

"From our perspective the messages were very motivating and inspirational both personally and professionally. A great reminder of how we need to keep to our every day work with each other, with our customers, and with our suppliers. Kevin left us with some great tools to use," said Allan McFall.

FORESEEING THE RISK

Health & Safety at Conference provided the chance to remind the staff on the importance of taking a proactive approach to Health, Safety & Environment.

"Each of us has the duty to cooperate when it comes to achieving Zero harm. The Corrective Action Requests



are an ideal way of dealing with any potential risks," said Sheryl Dawson. "Recently we have been putting a lot of effort into not only working with Forest Owners and Managers but also a number of sites that we deliver to in Auckland. The collaborative approach is endeavouring to pre-empt any risks by dealing with the identified hazards. Observations while deliveries are occurring in normal work situations have proved to be an excellent way of identifying and assessing risks. Designated areas on site where Into machine deliveries are to occur are being developed with customers along with an agreed set of behaviours from all parties involved."

A number of the team are at present refining a Job Site Safety Checklist so that we will be in a better position to work with all customers going forward when it comes to safety.

MORRIS MCFALL RETIRES AS BOARD CHAIR



The end of an era was announced at the McFall Fuel Conference last month. Morris McFall has decided now is the time for him to step aside as Board Chair. "At the age of 81 it is time to take it a little more easy and I leave confidently knowing the Board will be in good hands. Driver, Peter Ritsema, who was recognized for his 30 years of service earlier was with me at the beginning of the move into the fuel delivery market. I look around this room and see staff who came, went, and came back to work for us just as I knew they would. General Manager of Operations Paul Clampitt is a good example of that. We have grown the fleet from one old Ford and the staff to 73, 36 of whom a drivers. It is really quite impressive. The August AGM will be my last one as Board Chair of McFall Fuel. Thanks to you all and I will see you from time to time when I am at the Museum," said Morris.

What's Happening @ 0800 623 255

LUUKA JONES RIO DE JANEIRO



"I feel like I am in a bubble here in the village so not really sure how things are ramping up in NZ. Its pretty exciting. We arrived in the village a few days ago and it was a real buzz to be officially welcomed into the team and receive the NZ uniform. We all got a special pounamu as well which is awesome. The NZ team have done a great job of getting our accommodation in the village ready and we have a great team area with beanbags and pictures of NZ to make us feel at home. It feels like it has been pretty busy finding a routine here, walking to the food hall and figuring out

the different cuisines, catching the bus out to our training venue (which luckily only takes 30mins) and training. Its great to catch up with my friends and athletes as they arrive in the village and every day it is getting a little bit busier. The village feels pretty big with lots of 18 story apartment blocks. It looks really nice with lots of swimming areas and water features."

"Each team decorates their towers with flags and it looks pretty colourful. There are parts of the village I am yet to explore. One of these is an outdoor BBQ area and an entertainment building with table tennis etc... There is a bit of down time so I am sure I will have time to get to these places," said Luuka.



BOP RUGBY SPONSORSHIP LAUNCHED



McFall Fuel will have been a sponsor of the BOP Steamers for 6 years, this year. Barry Cleverley said, "the sponsorship began in 2011 as an annual match day and then became back of jersey in 2015 with Direct Fuels." Logan Fleming and Warren Broadmore (hardcore Waikato) attended the 2016 Mitre 10 Cup team launch and met Henry Stowers who will play in the McFall Fuel No.6.



CHAIN & BAR HEAVY WINTER PROMOTION

McFall Fuel's research in the market place has revealed that the forestry industry is moving into a much more automated environment. Working with Fuchs to develop the very latest chain and bar oil to suit mechanical harvesters has given rise to a quality product to protect the life of equipment as well as keep older equipment in optimal working condition. The new MCF220 chain and bar oil is specifically designed for applications on hydraulically driven bars on mechanical log processing heads in commercial forestry equipment. Reducing blade wear and stretching along with maintenance and service costs is the benefit. A month to go!



**BUY 10 X 20 LITRES &
GET ONE FREE**

REUSE & RECYCLE | We collect and reuse your empty oil containers. Any unusable containers are recycled.



The Complete Package



FUEL



FUEL CARD



FUEL TANKS



LUBRICANTS



SERVICE



TANK REPAIRS & MAINTENANCE