



FUELLED

NEWSLETTER

JULY 2017

MAKING THE FLEET MORE PRODUCTIVE



Drivers Barry Petch and Alan Smedley in Te Awamutu are seen standing in front of our first forty six tonne eight axle combination, allowing us to carry an extra 2000 litres of product. We have also just changed over one of our trailer's draw bars so that it is able to load to forty six tonne. With another new forty six tonne spec trailer currently in build we will have three combinations with the ability to load to forty six tonne or in total an extra 6000 litres out the gate with a per trip saving of up to sixty nine truck and trailer trips a year. Being able meet delivery demands safely and with greater efficiency all helps our productivity.

McFall Fuel Logistics Manager, Scott Jeanes, said "the aim is to safely increase the litres delivered per kilometre travelled which in turn will improve efficiencies across the fleet. This has also been achieved with the use of our 50MAX units. The 46 tonne units are a good middle ground, with a great payload and good maneuverability so fit nicely between our 44 tonne & 50MAX combinations."

THE INTEGRATION WITH RURAL FUEL

From time to time customers ask how is the merge going with Rural Fuel. The answer is that it is beginning slowly and is being managed in a well planned way to ensure that we continue to meet our customer needs without interruption. We have already gained some fuel delivery efficiencies in those areas where the two businesses have overlapped. This has seen a different driver and differently branded truck appear but the fuel is delivered in the same way.



TWENTY YEARS DRIVING FOR MCFALL FUEL



Barry Petch began working for the McFall family in Te Awamutu as a fifteen year old sweeping the floors in the freight yard after school. This led onto a job as a driver with McFall Freight and Allan McFall trained him. Taking time away to work for another local company he returned to work for McFall Fuel in 1997, as has happened with others who have worked for McFall businesses over the years. Barry celebrated his twentieth year driving fuel in June of this year. He has seen a number of changes over this time, particularly the growth in the Company.

"We are very proud of Barry's long service," said Allan McFall. "He is the ultimate family man, who has been very loyal but also needs to be recognized for being an extremely capable operator who gets on with his fuel delivery job without fuss. Barry is very professional and his consistent approach is what we aim for when it comes to deliveries." The Te Awamutu Driving Team have three long serving drivers with Peter Ritsema reaching 31 years in May and Alan Smedley 12 in October this year. This is quite an achievement in today's world given the demands placed on the industry.

The personnel from each business are being drawn together to look at synergies and differences as well as looking for those opportunities where there is real value in working together. With BP no longer offering their very longstanding and comprehensive training programme the two Companies Operations Teams' have commenced developing what will become the Integrated Company Training Programme for fuel delivery drivers.

The Commercial and the Finance and Administration Teams' will be meeting in July and then in late August the personnel from both companies will come together and be part of a joint Company Conference.

What's Happening @ 0800 623 255

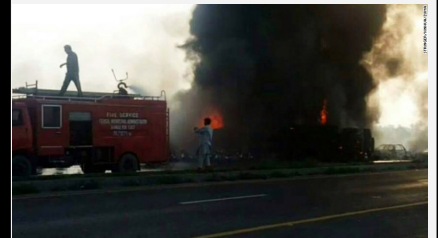
MCFALL FUEL SPONSOR THE FOSSIL FUELS UNIT



Jane Hoggard from the House of Science has really enjoyed developing the McFall Fuel sponsored Fossil Fuels Unit. She is seen here showcasing the Kit with National CEO Chris Duggan (seated), to McFall Fuel staff Shona Thompson, Rick Williams, Todd Pelham, and Allan McFall. The Fossil Fuel Kit is now available to schools in the area and McFall Fuel staff are looking forward to their youngsters being challenged by the exciting student activities.

NEW REGULATIONS FOR HAZARDOUS SUBSTANCES

On December 1 2017, the Health & Safety at Work Act will see the new Regulations for Hazardous Substances will come into force. As we all know hazardous substances are found in use across a wide range of industries including agriculture, fuels, quarrying, and manufacturing for example. If we look at fuel the sector, the standards set in New Zealand are extremely high. The



recent fuel tanker explosion in Pakistan is a reminder of how such incidents can be catastrophic when people do not understand the need for safety and well being. Sources at the scene indicated cell phones were being used and people were smoking cigarettes while taking fuel from the crashed tanker.

Reducing harm requires the need for safe handling, exposure controls, and personal protection. This is why our Operations Team put so much time and energy into the training of safe handling with the fuel delivery drivers. Diesel's health hazards are outlined on Material Safety Data Sheet — there is a limited carcinogenic effect and if swallowed it may cause lung damage. Repeated exposure may cause skin dryness or cracking. When it comes to the environment it is toxic to aquatic organisms.

GREASE ISN'T GREASE ANYMORE



Grease solutions are best discussed with the McFall Fuel Sales Representative who works with you so that you are able to find the best grease solution for your application. Their approach is to aim to extend the life of your equipment and keep your maintenance costs down.

POLIPLX 2 is for heavy industrial applications subject to heat, loads, shear, and water conditions. Ideal for applications where heavy shock loading is present and the grease must resist "Squeeze Out". The formulation also incorporates specially selected mineral oils, extreme pressure, anti-wear, rust and corrosion additives that gives it the performance properties to properly lubricate today's modern equipment.

RENOLIT HDCE 2 is heavy duty extreme pressure grease specially formulated for mining, earthmoving, and construction equipment operating under arduous conditions. Especially suited to applications where parts are subjected to oscillating movement, vibration, and shock load.



The Complete Package



FUEL



FUEL CARD



FUEL TANKS



LUBRICANTS



SERVICE



TANK REPAIRS & MAINTENANCE